



**ShivShakti** **PACKAGING SOLUTIONS**  
ENGINEERING. PRECISION. AUTOMATING. SCALE.

# COMPANY PROFILE

SHIVSHAKTI PACKAGING GROUP

+91 95602 94604

info@shivshaktipack.com

www.shivshaktipack.com



Scan to connect



Scan to connect



# About Shivshakti Packaging Group

Shivshakti Packaging Group operates through two specialized divisions—Solutions in Delhi and Systems in Ghaziabad—delivering export-grade packaging machines and automation tools for industrial excellence. Unified by a shared vision and brand identity, both divisions serve the same market with complementary expertise.



**ShivShakti**

SHIVSHAKTI PACKAGING SOLUTIONS

ENGINEERING PRECISION. AUTOMATING SCALE.

Based in Delhi, Shivshakti Packaging Solutions specializes in high-speed packaging machines for FMCG, agro, and industrial sectors. From vertical form-fill-seal systems to pouch feeders and strapping units, every machine is engineered for automation, export compliance, and long-term reliability.

- ISO-certified manufacturing
- Global export support
- Customizable machine specs
- Durable, automation-ready designs



**ShivShakti**

SHIVSHAKTI PACKAGING SYSTEMS

ENGINEERING PRECISION. AUTOMATING SCALE.

Operating from Ghaziabad, Shivshakti Packaging Systems focuses on packaging automation, data workflows, and digital infrastructure. From invoice generators to dashboard tools, our systems are built for industrial precision, export documentation, and seamless integration with manufacturing pipelines.

- ISO-certified manufacturing
- Global export support
- Customizable machine specs
- Durable, automation-ready designs

## Strapping Machines



### SSP-01FA Heavy Duty

*Heavy-duty automatic strapping for high-volume packaging*

arch Size: 850W x 400/600H mm

strap Cycle Speed: 27 cycles/min

tensile Strength: Max. 70 kg (mechanically adjustable)

strap Width: 9/12/15 mm (to be specified)

sealing Method: Heat Sealing

dimensions: 1400W x 640D x 1475H mm

table Height: 805 mm

power Supply: 3 Phase, 380V, 50Hz, 1250W

machine Weight: 220 kg

gross Weight: 265 kg

control: PLC Control

## Strapping Machines

### SSP-01FA PBC (Online)

*Online automatic strapping for dynamic packaging lines*

arch Size: 850W x 600H mm

strap Cycle Speed: 2.5 sec/cycle

tensile Strength: Max. 70 kg

strap Width: 9/12/15 mm

sealing Method: Heat Sealing

dimensions: 1550W x 640D x 1550H mm

table Height: 820 mm

package Size: 200–520W x 30–560H mm

power Supply: 1 Phase 110/220V or 3 Phase 220/380V, 50/60Hz

machine Weight: 307 kg

gross Weight: 402 kg

control: PLC Control



## Strapping Machines

### SSP-01FA PRC (Online)

*Online automatic strapping with extended package range*

arch Size: 850W x 600H mm

strap Cycle Speed: 2.5 sec/cycle

tensile Strength: Max. 70 kg

strap Width: 9/12/15 mm

sealing Method: Heat Sealing

dimensions: 1550W x 800D x 1470H mm

table Height: 810 mm

package Size: 300-820W x 30-560H mm

power Supply: 1 Phase 110/220V or 3 Phase 220/380V, 50/60Hz

machine Weight: 330 kg

gross Weight: 430 kg

control: PLC Control



## Strapping Machines

### SSP-01SH (Semi-Automatic)

*Semi-automatic strapping for mid-weight packages*

arch Size: 850W x 600H mm

strap Cycle Speed: 1.5 sec/strap

tensile Strength: 15-60 kg

strap Width: 5-15 mm

sealing Method: Heat Sealing

dimensions: 900W x 580D x 750H mm

table Height: 810 mm

package Size: 300-820W x 30-560H mm

power Supply: 220V, 200W, 50/60Hz, 1 Phase

machine Weight: 110 kg

gross Weight: 430 kg

control: Manual



## Strapping Machines

### SSP-01SR (Semi-Automatic)

*Compact semi-automatic strapping for small packages*

arch Size: 850W x 600H mm

strap Cycle Speed: 1.5 sec/strap

tensile Strength: 5-50 kg

strap Width: 6-15 mm (adjustable)

sealing Method: Heat Sealing

dimensions: 900W x 580D x 750H mm

table Height: 810 mm

package Size: 60W x 30H mm

power Supply: 220V, 200W, 50/60Hz, 1 Phase

machine Weight: 100 kg

gross Weight: 430 kg

control: Manual



## Strapping Machines

### FullyAutomatic Strapping Machine

*Fully automatic combo system for sealing and strapping*

strap Cycle Speed: 1.5 sec/strap

belt Speed: 20 m/min (carton sealer)

carton Weight: 5-40 kg

strap Width: 9/12/15 mm (to be specified)

sealing Method: Heat Sealing

tension Adjustment: 5-70 kg

adhesive Tape: 48/60/72 mm

package Size: 300-700L x 200-500W x 150-500H mm

power Supply: 3 Phase, 380V, 50Hz, 1.5 KW

machine Weight: 450 kg



# Carton Sealing Machines



## SSP-02MA Heavy Duty

*Heavy-duty carton sealing for export-grade packaging*

**function:** Top & Bottom Drive

**power Supply:** 220V/230V/240V or 380V/415V/440V, 50/60Hz, 2\* or 3\* Phase (as per customer)

**tape Carton Dimensions:** {"2\* Tape": "L: 150mm-∞, W: 130-500 mm, H: 110-500 mm", "3\* Tape": "L: 150mm-∞, W: 155-500 mm, H: 110-500 mm"}

**working Table Height:** 570-770 mm (adjustable)

**belt Speed:** 20 m/min

**machine Size:** 1105 × 785 × 1420 mm

**machine Weight:** 145 kg

## Carton Sealing Machines

### SSP-02SA Self Adjustment (Pneumatic)

*Self-adjusting pneumatic system for variable carton sizes*

**function:** Top & Side Drive

**power Supply:** 220V/230V/240V or 380V/415V/440V, 50/60Hz, 2\* or 3\* Phase (as per customer)

**tape Carton Dimensions:** {"2\* Tape": "L: 150mm-∞, W: 130-500 mm, H: 110-500 mm", "3\* Tape": "L: 150mm-∞, W: 155-500 mm, H: 110-500 mm"}

**working Table Height:** 570-770 mm (adjustable)

**machine Size:** 1250 × 910 × 1315 mm

**machine Weight:** 160 kg



## Carton Sealing Machines



### SSP-02SA-FC (Auto Adjustment + Auto Flap Closing)

*Fully automatic flap closing and sealing for high-speed lines*

**function:** Side Drive

**power Supply:** 220V/230V/240V or 380V/415V/440V, 50/60Hz

**tape Width:** 2\* or 3\* (as per customer)

**tape Carton Dimensions:** {"2\* Tape": "L: 150-600 mm, W: 200-500 mm, H: 150-500 mm", "3\* Tape": "L: 150-600 mm, W: 200-500 mm, H: 150-500 mm"}

**working Table Height:** 570-770 mm

**belt Speed:** 20 m/min

**machine Size:** 1985 × 950 × 1625 mm

**compressed Air:** 6 kg/cm<sup>2</sup>

## Carton Sealing Machines

### SSP-02MA Regular Model

*Compact carton sealer for standard packaging operations*

conveying Belt Speed: 20 m/min

min Carton Size: 140W x 150H mm (L: no bar)

power Supply: 220V, 50Hz, 200W, 1 Phase

working Table Height: 625–780 mm (adjustable)

adhesive Tape Width: 48/60/72 mm

machine Size: 1755 × 740 × (1445–1605) mm

machine Weight: 120 kg

options: Infeed / Outfeed Conveyor



# Carton Stretch Wrapping Machines



## 3015A (Shrink Wrapper)

*Compact shrink wrapper for small-format packaging*

**machine Dimension:** 1200 × 510 × 710 mm

**shrink Size:** 800 × 300 × 150 mm (fixed height)

**conveying Weight:** 10 kg

**conveying Speed:** 0–10 m/min (adjustable)

**power Supply:** 220V, 50Hz

**material:** POF/PVC

**machine Weight:** 70 kg

# Continuous Band Sealing Machines

## Semi-Automatic L Sealer

*Semi-automatic L sealer for medium-volume packaging*

machine Type: Semi Automatic

dimensions: 1569 × 710 × 1010 mm

max Packaging Size: 450 × 400 × 250 mm

sealing Size: 550 × 450 mm

packaging Speed: 800–1000 pcs/hour

power Supply: 220V, 50Hz, 1.2 KW

net Weight: 110 kg



## Continuous Band Sealing Machines



### 5540 Shrink Tunnel

*Shrink tunnel for high-volume shrink wrapping*

dimensions: 2550 × 850 × 1500 mm

max Packaging Dimension: 1450 × 550 × 400 mm

packing Speed: 0-10 pcs/min

power Supply: 380V, 50Hz, 3 Phase, 2.1 KW

machine Weight: 300 kg

## Continuous Band Sealing Machines

### SSP-770 (Continuous Band Sealer)

*Compact band sealer for lightweight packaging*

power Supply: 110V / 220V, 50Hz, 60W

sealing Electric Power: 2 × 300W

sealing Speed: 0-21 m/min

sealing Width: 6-12 mm

temperature Range: 0-300°C

sealing Center To Conveyor: 10-40 mm

film Thickness: < 0.4 mm

max Load Weight: < 3 kg

dimensions: 840 × 380 × 270 mm

machine Weight: 21 kg



## Continuous Band Sealing Machines



### SSP-1100V (Heavy Duty Band Sealer)

*Compact heavy-duty band sealer for medium loads*

power Supply: 220V, 50Hz, 120W

sealing Speed: 0-12 m/min

sealing Width: 8-12 mm

temperature Range: 0-300°C

dimensions: 1243 × 580 × 1228 mm

conveyor Loading: < 10 kg

machine Weight: 80 kg

# Vacuum Sealer Machines

## DZ-4002E

*Compact single-chamber vacuum sealer for small-format packaging.*

power Supply: 220V / 50Hz, 0.75 KW

heat Sealing Power: 0.5 KW

vacuum Chamber Size: 440 × 420 × 130 mm

sealing Strip Size: 400 × 10 mm

vacuum Pump Capacity: 20 m<sup>3</sup>/hour

machine Dimension: 540 × 490 × 880 mm

machine Weight: 120 kg



## L Sealing Machines



### LS-450

*Compact semi-automatic L sealer suitable for small to medium packaging volumes.*

power Supply: 220V / 50Hz, 1.5 KW

sealing Area: 450 × 350 mm

film Type: PVC / POF shrink film

packing Speed: 10-15 packs/minute

machine Dimension: 1450 × 700 × 1050 mm

machine Weight: 120 kg

## L Sealing Machines

### LS-600A

*Automatic L sealer with higher speed and larger sealing area for industrial use.*

power Supply: 220V / 50Hz, 2.5 KW

sealing Area: 600 × 450 mm

film Type: PVC / POF shrink film

packing Speed: 15-25 packs/minute

machine Dimension: 1600 × 800 × 1150 mm

machine Weight: 180 kg



# Shrink Chamber Machine



## SC-4525

*Compact shrink chamber machine suitable for small to medium packaging volumes.*

power Supply: 220V / 50Hz, 3.5 KW

sealing Area: 450 × 250 mm

film Type: PVC / POF shrink film

packing Speed: 8-12 packs/minute

machine Dimension: 1200 × 650 × 1050 mm

machine Weight: 100 kg

## Shrink Chamber Machine

### SC-5540

*Large-format shrink chamber machine for higher output and bigger product sizes.*

power Supply: 220V / 50Hz, 4.5 KW

sealing Area: 550 × 400 mm

film Type: PVC / POF shrink film

packing Speed: 10-15 packs/minute

machine Dimension: 1350 × 750 × 1150 mm

machine Weight: 130 kg



# Inkjet Printing Machine



## IJ-100

*Compact handheld inkjet printer for batch coding and small-scale packaging.*

power Supply: 220V / 50Hz, 150W

printing Speed: 60–80 m/min

printing Resolution: 300 dpi

printing Height: 1–12.7 mm

machine Dimension: 350 × 250 × 200 mm

machine Weight: 8 kg

## Inkjet Printing Machine

### IJ-2000

*Industrial inkjet printer for continuous high-speed production lines with larger print area.*

power Supply: 220V / 50Hz, 300W

printing Speed: 100-120 m/min

printing Resolution: 600 dpi

printing Height: 1-50 mm

machine Dimension: 450 × 300 × 250 mm

machine Weight: 15 kg



# Web Sealer Shrink Machine



## WS-5540A

*Automatic web sealer with shrink tunnel, suitable for medium to high-volume packaging.*

power Supply: 220V / 50Hz, 2.5 KW

sealing Size: 550 × 400 mm

film Type: PE / PVC shrink film

packing Speed: 15-25 packs/minute

machine Dimension: 1450 × 700 × 1450 mm

machine Weight: 250 kg

# Induction Sealer Machine

## IS-500

*Portable tabletop induction sealer suitable for small to medium production runs.*

power Supply: 220V / 50Hz, 500W

sealing Diameter: 20–100 mm

machine Dimension: 340 × 290 × 150 mm

machine Weight: 5.5 kg



# Hand Pallet Truck



## HPT-2500

*Standard heavy-duty hand pallet truck suitable for industrial and warehouse use.*

load Capacity: 2500 kg

fork Length: 1150 mm

fork Width: 520 mm

min Fork Height: 90 mm

max Fork Height: 200 mm

wheel Material: Nylon / PU

machine Dimension: 1540 × 520 × 1230 mm

machine Weight: 65-75 kg (depending on wheel type)

# PET Strapping Tool

## 4002E

*Compact handheld PET strapping tool with ergonomic grip and friction weld sealing, suitable for small to medium packaging applications.*

power Supply: 220V / 50Hz, 0.75 KW

strap Width: 13-16 mm (Adjustable)

machine Dimension: 375 × 130 × 140 mm

machine Weight: 3.9 KG



# Thermal Hand Inkjet Printer



## TH-100

*Compact handheld TIJ printer for small-scale batch coding.*

power Supply: DC 16V (Rechargeable Battery)

printing Speed: 40–60 m/min

printing Resolution: 300 dpi

printing Height: 1–12.7 mm

machine Dimension: 230 × 135 × 80 mm

machine Weight: 1.2 kg

## Thermal Hand Inkjet Printer

### TH-200

*Advanced handheld TIJ printer with higher resolution and larger print height for industrial use.*

power Supply: DC 24V (Rechargeable Battery)

printing Speed: 80–100 m/min

printing Resolution: 600 dpi

printing Height: 1–25 mm

machine Dimension: 260 × 150 × 90 mm

machine Weight: 1.6 kg



## High-Speed Strapping Machines



### Corrugated Strapping Machine – HS-9

*Fully automatic high-speed strapping machine for corrugated packaging lines.*

strap Width: 5–9 mm

strap Thickness: 0.35–0.65 mm

coil Inner Diameter: 200 mm

coil Outer Diameter: 420 mm

coil Width: 190 mm

table Height: 700–1000 mm (adjustable)

power Supply: 415V, 50Hz, 3 Phase

air Consumption: 6.7 liters/cycle

machine Weight: 450 kg

## PP Strapping Rolls



### PP Strap Roll – 12mm × 1kg

*High tensile strength, lightweight, recyclable, suitable for carton bundling.*

width: 12 mm

thickness: 0.6 mm

length: 1000 m

weight: 1 kg

color: White / Blue / Yellow

compatibility: Manual & Semi-Automatic Machines

## PP Strapping Rolls

### PP Strap Roll – 9mm × 5kg

*Economical high-capacity roll for continuous strapping operations.*

**width:** 9 mm

**thickness:** 0.5 mm

**length:** 5000 m

**weight:** 5 kg

**color:** Black / White / Custom

**compatibility:** Semi-Automatic Machines



# Stretch Films



## Stretch Film – 400m Hand Grade

*Self-sealing, moisture-resistant, ideal for bundling and manual pallet wrapping.*

**width:** 29 cm

**length:** 400 m

**thickness:** 23 microns

**material:** LLDPE

**finish:** Glossy / Matte

## Stretch Films

### Stretch Film – 1500m Machine Grade

*High-performance machine grade film for automated pallet wrapping and heavy-duty loads.*

**width:** 50 cm

**length:** 1500 m

**thickness:** 25 microns

**material:** LLDPE

**finish:** Glossy



## BOPP Adhesive Tapes



### **BOPP Tape – 48mm × 65m**

*Strong adhesion, tear-resistant, suitable for carton sealing and branding.*

**width:** 48 mm

**length:** 65 m

**thickness:** 40 microns

**adhesive Type:** Acrylic

**color:** Transparent / Brown / Custom Print

## BOPP Adhesive Tapes

### BOPP Tape – 72mm × 65m

*Wider tape for heavy-duty cartons and export packaging.*

**width:** 72 mm

**length:** 65 m

**thickness:** 42 microns

**adhesive Type:** Acrylic

**color:** Transparent / Brown / Custom Print



## Paper Edge Protectors



### Edge Board – 50mm × 50mm × 3mm

*Moisture-resistant, recyclable, ideal for export pallets.*

leg Length: 50 mm × 50 mm

thickness: 3 mm

length: 1000 mm

material: Laminated Kraft Paper

compression Strength: >500 kg

## Paper Edge Protectors

### Edge Board – 75mm × 75mm × 5mm

*Heavy-duty edge protector for larger pallets and industrial loads.*

**leg Length:** 75 mm × 75 mm

**thickness:** 5 mm

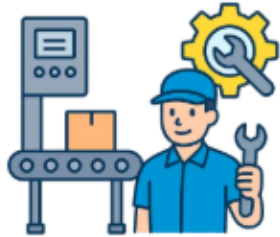
**length:** 1200 mm

**material:** Laminated Kraft Paper

**compression Strength:** >800 kg



## Services & Support



### Annual Maintenance Contracts

Scheduled servicing and preventive maintenance for packaging machines to ensure long-term performance, reduced downtime, and export-grade reliability.

- Custom AMC plans for all machine types
- On-site diagnostics and tune-ups
- Priority support and spare part access



### Machine Repairs & Diagnostics

Expert repair services for strapping, sealing, and vacuum systems. Our technicians restore operational efficiency with genuine parts and precision tools.

- Fast turnaround for critical faults
- Certified technicians and OEM parts
- Support for legacy and new models



## Spare Parts & Replacements

Access genuine replacement parts for all Shivshakti machines. From belts and blades to sensors and control panels, we stock what industries need.

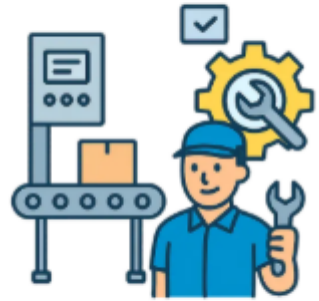
- Verified OEM-grade components
- Inventory for high-speed systems
- Export-ready packaging of spares



## Custom Pouch & Label Printing

Branded pouch and label printing services for FMCG, agro, and industrial packaging. Enhance shelf appeal while maintaining compliance.

- Multi-color flexo and rotogravure options
- Export-compliant print formats
- Fast lead times and design support



## Packaging Workflow Consulting

Strategic guidance for automation, compliance, and layout optimization. Ideal for new plants, export setups, and scaling operations.

- Export documentation alignment
- Machine layout and throughput planning
- Integration with invoicing and ERP systems

## Trusted by Industry Leaders

Raj  
Chauhan

*"Shivshakti Packaging Group has consistently delivered high-performance packaging machines and durable consumables tailored to industrial needs. Their commitment to precision engineering, responsive repair services, and reliable operations & maintenance support makes them a trusted partner for automation-driven packaging workflows."*

**Raj Chauhan**

Industrial Automation Expert

Navi  
Singh

*"Shivshakti Packaging Group stands out for its integrated approach to packaging excellence. Their portfolio of high-performance machines, reliable consumables, and responsive repair and O&M services reflects a deep understanding of industrial workflows. Whether you're scaling automation or optimizing throughput, Shivshakti delivers precision, durability, and strategic support across every touchpoint."*

**Navi Singh**


Global Techno-Commercial Leader –AI, IoT & ICT

Ankush  
Sharma

*"Shivshakti Packaging Group has been instrumental in keeping our packaging lines running smoothly. Their machines are built for durability, and their support team is responsive when it comes to repairs and maintenance. From consumables to O&M services, they understand the practical demands of industrial packaging and deliver with consistency."*

**Ankush Sharma**

Assistant Manager – Maintenance & Operations




DOCUMENTATION // ARCHIVE

## ***READY TO EXPLORE OUR PRODUCT RANGE?***

DOWNLOAD THE COMPLETE SHIVSHAKTI PACKAGING BROCHURE AND REVIEW OUR  
COMPREHENSIVE SPECIFICATIONS BLUEPRINTS.

[↓ DOWNLOAD\\_STATIC\\_PDF](#)

[BUILD\\_LIVE\\_SPECIFICATION →](#)





**ShivShakti** PACKAGING SOLUTIONS  
ENGINEERING PRECISION. AUTOMATING SCAL...

Empowering industries with precision packaging, automation, and branded consumables for export-ready excellence.



## Explore

- Home
- Products
- Services
- About
- Contact

## Address

- Packaging Solutions**  
HN F269 KH.No - 445/49/73, Pandav Nagar,  
New Delhi - 110092
- Packaging Systems**  
B-136, Anand Industrial Estate, Mohan Nagar,  
Ghaziabad - 201007

## Quick Contact

- ✉ info@shivshaktipack.com
- ☎ +91 95602 94604

